

# Astor and Astor Double

9651  
9652

Project Name \_\_\_\_\_

Fixture Type \_\_\_\_\_

Quantity \_\_\_\_\_

Norwell | Lighting

I L E X

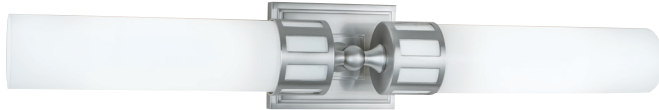
Custom Metalcraft



Aster Sconce  
9651-CH-SO

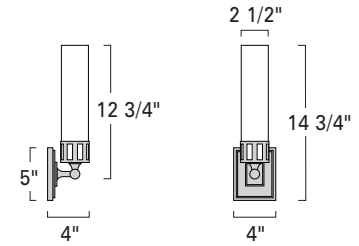


Aster Double Sconce  
9652-PN-SO

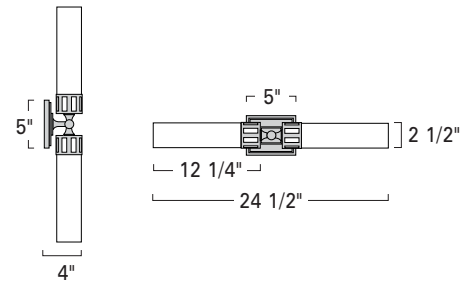


Aster Double Sconce  
9652-BN-SO

9651



9652



**LED- ADA**

Product Name / Model / Dimensions	Finish Options	Glass Options	Lamping Options												
Astor Sconce - 9651 Astor Double Sconce - 9652 <table border="1"> <thead> <tr> <th>Series</th> <th>Height</th> <th>Width</th> <th>Projection</th> </tr> </thead> <tbody> <tr> <td>9651</td> <td>14.75"</td> <td>4.00"</td> <td>4.00"</td> </tr> <tr> <td>9652</td> <td>24.50"</td> <td>4.00"</td> <td>4.00"</td> </tr> </tbody> </table> Backplate 5.00" H x 4.00" W	Series	Height	Width	Projection	9651	14.75"	4.00"	4.00"	9652	24.50"	4.00"	4.00"	<b>Standard</b> Brushed Nickel / BN Polished Nickel / PN Chrome / CH	<b>Standard</b> Shiny Opal / SO  11H X 2.5W	<b>Standard</b> 9651 Incandescent / IN (1) 60W max medium base T-10 Edison  Optional LED / LED 1728lm 3000K CCT ELV dimmable <hr/> 9652 Incandescent / IN (2) 60 W max medium base T-10 Edison  Optional LED / LED 3456 lm 3000K CCT ELV dimmable
Series	Height	Width	Projection												
9651	14.75"	4.00"	4.00"												
9652	24.50"	4.00"	4.00"												

Damp Location and UL/ETL Listed

10-2020

**DISCLAIMER:**

Norwell Lighting and its companies, ILEX Architectural Lighting and Custom Metalcraft reserve the right to change specifications related to its product at anytime. USA Made indicates product is manufactured in East Taunton, Massachusetts facility. Phone: 508-823-1751